

HP Engage for Healthcare

hp with intel®

Designed for demanding environments



Long lifecycle

Up to 10 years of service life. 3 to 5-year manufacturing, plus 5-year service & parts.



Rugged & reliable

IP rated & EMI Certified. Compatible with medical-grade germicidal wipes & glove tested.



Flexible form factors

AIO, mobile, and modular. Extensive mounting options and peripherals¹



Best-in-class serviceability

Highly configurable devices. User serviceable to minimize downtime.

Built to function across a host of healthcare environments

From onsite to telemedicine, clinicians need technology at their fingertips as they interact with patients. HP Engage devices can safely and securely capture sensitive patient information on-the-go and under challenging conditions. Clean devices post visit with medical grade germicidal wipes. HP Engage solutions are available in a range of form factors and configurations to accommodate healthcare requirements.



Clinical settings

Helping clinicians and Patients

Acute care

Clinician charting, bedside consultation, medical carts, meds to beds, emergency room, operating room

Ambulatory & doctor's office

Charting, patient engagement

Long-term assisted living

Charting, shareable computer

Telemedicine

Clinician to clinician and clinician to patient



Administrative

Patient data management, intake, insurance, and billing

Admissions

Signage-way finding, patient info in-take, self-service, patient welcome

Charting

Clinician patient documentation

Payment/insurance processing

Accepting payments, tracking insurance, submitting claims, print receipts



Retail in healthcare

Customer interactions and back office

Pharmacy

Dispense medication, inventory tracking, payment processing, customer education

Cafe

Menu signage, ordering, payment processing

Gift shop

Payment processing, inventory control



Mobile

Capturing patient data on the go

Ambulance

Patient charting, tracking modalities, communicating with healthcare organizations

Blood donation

Tracking patients, sharing data, patient education

Diagnosis on wheels

Admissions, tracking patients, charting

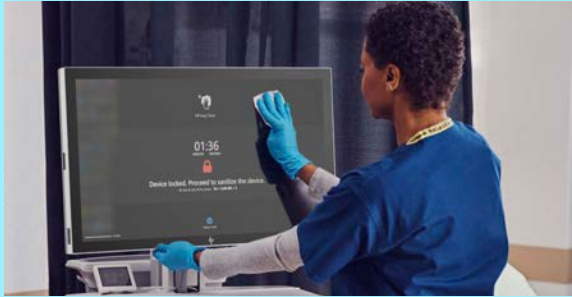
Home healthcare

Traveling nurses mobility, tracking modalities, communicating with clinicians

Healthcare organizations

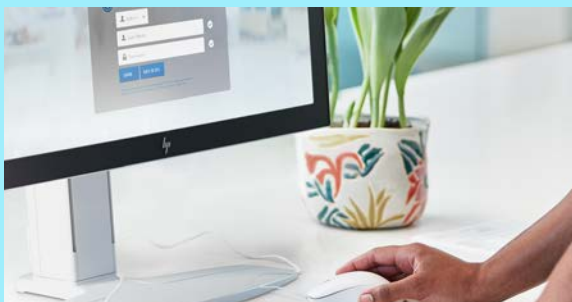
Focused on providing care in a safe, cost-effective manner

Today, busy leaders in all types of healthcare organizations are tasked with providing patient care in a safe and cost-effective manner. They are charged with keeping patients and staff safe, ensuring data and devices are secure and providing access to the healthcare services their patients' needs while optimizing interactions.



Keep patients and staff safe

Ensure compute devices can be disinfected using medical-grade wipes².



Secure patient data, access, and devices

Safeguard data and devices to defend against cybercrime. Imprivata ready to give you highly secure access to patient information.



Enhance patient experiences

Make sure patients receive the services they need with optimized interactions.



Manage costs and resources

Support staff with technology to be as productive as possible.

HP Engage All-in-One solutions



HP Engage One Pro

Compute and touchscreen in a single device



Purposeful design

Choose the best setup for your needs from full range tilt and height adjustability, wall, and pole mount to screen sizes and ports for accessories.³



Built to last

Designed for demanding environments featuring IP 44 ingress protection rate⁴



Bright touchscreen

Our premium anti-glare FHD touchscreen, offered in 15.6", 19.5", and 23.8" diagonal, boasts up to 625 nits of brightness⁵.



Infinite possibilities

Computer on wheels, desktop stand, wall mount¹ or kiosk. Three screen sizes. Portrait or landscape. Choose the setup that best suits your needs.



HP Engage Go 10 & 13.5

Technology on the go



Versatility

Combine the functionality of a traditional system with the agility of a mobile device. Available in either Black or White.



Security

Safeguard your system and customer information with multi-layered security at the operating system and beyond⁷.



High performance

Achieve peak performance with an incredibly resilient design, high-speed processor⁸, long-lasting battery⁹, and HP Fast Charge technology¹⁰.



Built to last

Designed for demanding environments featuring IP 54 rating. Protect your HP Engage mobile device from accidental drops and bumps with optional cases bringing it to an IP 65 rating¹¹.



HP Engage Flex Pro, Pro-C & Mini

Flexible and configurable



Flexibility

Configure the perfect fit with flexible connectivity, graphics, networking, accessory options, and three device size options¹.



Security and manageability

Manage your critical assets with advanced, integrated, and proactive security and manageability.



Performance

Designed to deliver better patient experiences without taking up valuable space, it offers fast, seamless operations.



Ruggedized

Designed to operate and tested¹² to perform in challenging environments with extended use hours.

Peripherals



Customer Facing Displays - Touch and non-touch models available



Barcode Scanner - Wired or wireless scanners for use in hand or fixed on a counter



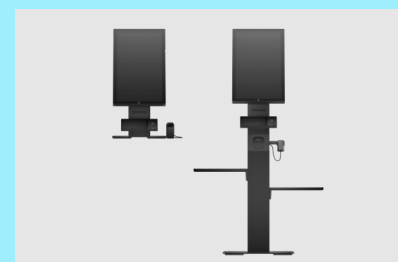
HP Engage Thermal Printer - Multiple connectivity options



USB-C multiport hubs and docking stations



HP All-in-One Adjustable Height Stand, in Black or White



Countertop and Pedestal kiosk stands



Protective Cases



Multi-charger for HP Engage Go 10



Magnetic Stripe Reader and Payment Module (U.S. only)



HP Engage Go Dock - With or without connectivity hub



HP Engage Go Fixed or Tilt Mount



Multiple Flex Ports available



Expertise and support to stay up and running



HP Configuration Services

Devices can be pre-configured before shipment so they're ready to use out of the box.



HP Care Packs

Service and support options range from three to five years¹³.



HP (Data) Sanitization Services

Secure data erasure and destruction in compliance with industry standards, conducted on or off premises¹⁴.



HP Recycling Services

Circular economy-friendly recycling of old devices¹⁵.



1. Sold separately or as configurable add-on features. Embedded peripherals excluding the barcode scanner and 6.6-inch customer-facing display must be configured at purchase. Mounting hardware is sold separately.
2. Tested by up to 10,000 wipes with germicidal towelettes over 3 years. See the user guide for cleaning instructions. Tested with Sani-Cloth® HB Germicidal Disposable Wipe (EPA Reg. No. 61178-4-9480), Sani-Cloth® Plus Germicidal Disposable Cloth (EPA Reg. No. 9480-6), Sani-Cloth® AF3 Germicidal Disposable Wipes (EPA Reg. No. 9480-9), Super Sani-Cloth® Germicidal Disposable Wipes (EPA Reg. 9480-4), CaviWipes® (EPA Reg. No. 46781-8), Clorox Healthcare® Bleach Germicidal Wipes (EPA Reg. No. 67619-12), Windex® Electronic Wipes and PDI Easy Screen® Cleaning Wipe.
3. Embedded peripherals excluding the barcode scanner and 6.6-inch customer-facing display must be configured at purchase. Stands and VESA® Hubs must be configured at purchase. Mounting hardware is sold separately.
4. HP Engage One Essential All-in-One System is IP54 Certified. Test results are not a guarantee of future performance under these test conditions. Accidental damage requires an optional HP Accidental Damage Protection Care Pack. IP54: Test results are not a guarantee of future performance under these test conditions. Accidental damage requires an optional HP Accidental Damage Protection Care Pack.
5. Actual brightness will be lower with a touch screen.
6. HP Engage One Pro 19.5" version available in black only.
7. HP Wolf Security for Business requires Windows 10, Windows 11 or higher, includes various HP security features and is available on HP Pro, Elite, RPOS, and Workstation products. See product details for included security features. HP Sure Click, Sure Run, Sure Recover, and Sure Sense are supported on Win 10 Pro & Win 10 IoT Enterprise 2019 LTSC.
8. Multicore is designed to improve the performance of certain software products. Not all customers or software applications will necessarily benefit from the use of this technology. Performance and clock frequency will vary depending on application workload and your hardware and software configurations. Intel's numbering, branding, and/or naming is not a measurement of higher performance. For hard drives and solid-state drives, GB = 1 billion bytes. TB = 1 trillion bytes. The actual formatted capacity is less. Up to 36 GB (for Windows 10) of the system disk is reserved for the system recovery software.
9. MM18 battery life will vary depending on various factors including product model, configuration, loaded applications, features, use, wireless functionality, and power management settings. The maximum capacity of the battery will naturally decrease with time and usage. See <http://www.bapco.com> for additional details.
10. Recharges the battery up to 50% within 30 minutes when the system is off or in standby mode. A power adapter with a minimum capacity of 65 watts is required. After charging has reached 50% capacity, charging will return to normal. Charging time may vary +/-10% due to System tolerance.
11. 9 MIL-STD-810H testing is not intended to demonstrate fitness of U.S. Department of Defense (DoD) contract requirements or for military use. Test results are not a guarantee of future performance under these test conditions. Accidental damage requires an optional HP Accidental Damage Protection Care Pack. IP54: Test results are not a guarantee of future performance under these test conditions. Accidental damage requires an optional HP Accidental Damage Protection Care Pack. HP Engage Go 10 Mobile System is IP54 rated. If the unit has optional payment device IP the rating goes down to IP40.
12. HP Total Test Process testing is not a guarantee of future performance under these test conditions. Accidental damage requires an optional HP Accidental Damage Protection Care Pack.
13. Please contact your HP representative or authorized HP reseller for details. Device support may vary by country. Features vary among Standard, Enhanced, and Premium HP Device as a Service plans. HP services are governed by the applicable HP terms and conditions of service provided or indicated to the Customer at the time of purchase. Customers may have additional statutory rights according to applicable local laws, and such rights are not in any way affected by the HP terms and conditions of service, or the HP Limited Warranty provided with your HP Product.
14. For the methods outlined in the National Institute of Standards and Technology Special Publication 800-88 "Clear" sanitation method. HP Secure Erase does not support platforms with Intel® Optane™.
15. Percentage of ocean-bound plastic contained in each component varies by product. Recycled plastic content percentage is based on the definition set in the IEEE 16801-2018 standard. ITE Derived Closed Loop Plastic percentage is based on the definition set in the IEEE 16801-2018 standard. Sign up for updates at hp.com/go/getupdated

© Copyright 2023 HP Development Company, L.P. The only warranties for HP products are outlined in the expressly limited warranty statements accompanying such products. Nothing herein should be construed as constituting an additional warranty. HP shall not be liable for technical or editorial errors or omissions contained herein. Microsoft, Windows, and the Windows Logo are trademarks or registered trademarks of Microsoft Corporation in the U.S. and other countries. Intel, Core, Celeron, and Intel vPro are trademarks or registered trademarks of Intel Corporation or its subsidiaries in the United States and other countries. Android is a trademark of Google LLC. USB Type-C® and USB-C® are trademarks of USB Implementers Forum. Bluetooth is a trademark of its proprietor and is used by HP Inc. under license. DisplayPort™ and the DisplayPort™ logo are trademarks owned by the Video Electronics Standards Association (VESA®) in the United States and other countries.